



VELIS ARISTON NET

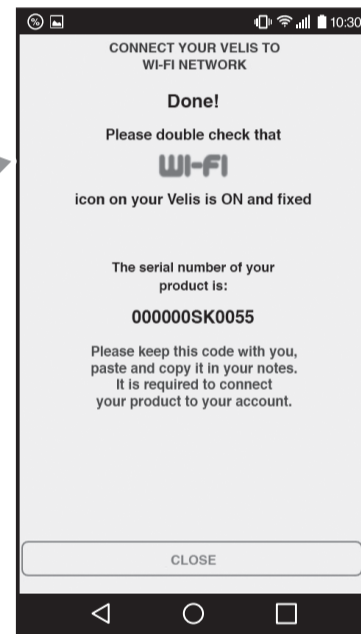
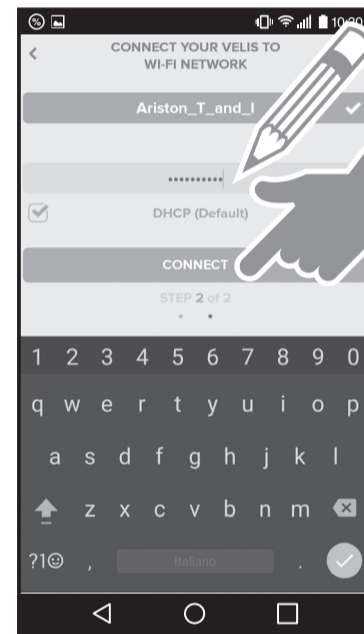
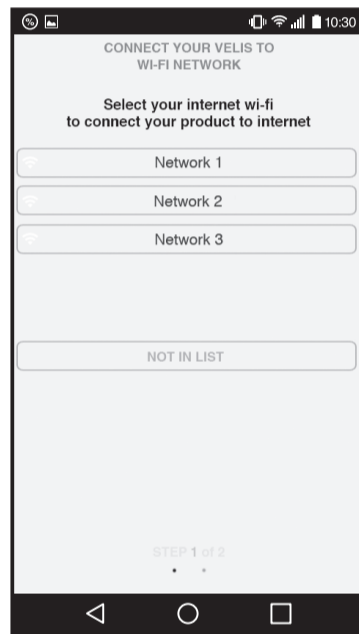
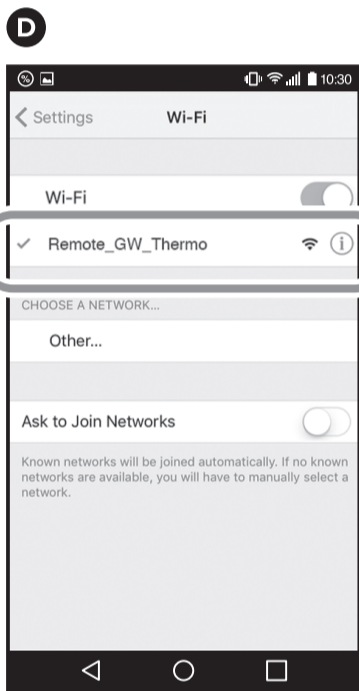
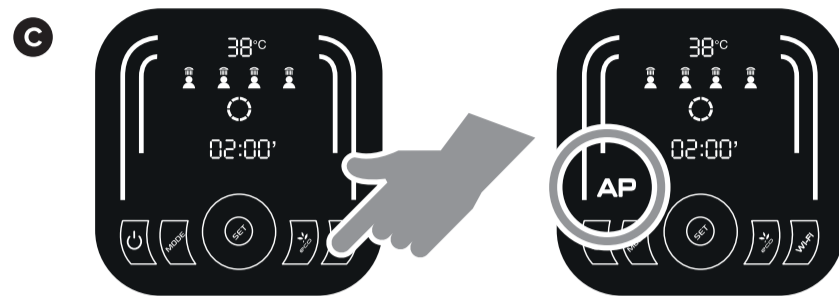
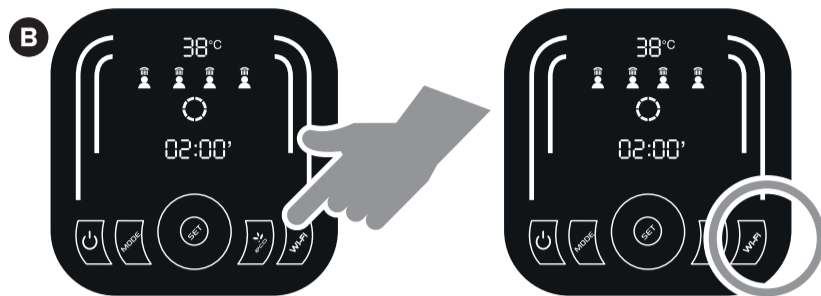
1 First Wi-Fi configuration

A

FREE DOWNLOAD

GET IT ON
Google play

Available on the
App Store



EN

1 FIRST Wi-Fi CONFIGURATION

A Free download VELIS ARISTON NET App from the **Apple App Store** or **Google Play**.

B Press the **Wi-Fi Button on the VELIS's HMI** to activate the Wi-Fi.

C **Press again for 5 sec** the Wi-Fi Button on the VELIS's HMI to create the VELIS Access Point.

D **Connect the smartphone** to the Access Point. On the network setting, select the «**Remote GW Thermo**» network.

E **Start Velis Ariston Net App** and follow the wizard to configure the domestic Wi-Fi. **Connection succeeded** when the "AP" icon will disappear and the Wi-Fi icon will appear on the display. Wi-Fi indicator lamp will keep on.

EN

1 FIRST Wi-Fi CONFIGURATION

A Free download VELIS ARISTON NET App from the **Apple App Store** or **Google Play**.

B Press the **Wi-Fi Button on the VELIS's HMI** to activate the Wi-Fi.

C **Press again for 5 sec** the Wi-Fi Button on the VELIS's HMI to create the VELIS Access Point.

D **Connect the smartphone** to the Access Point. On the network setting, select the «**Remote GW Thermo**» network.

E **Start Velis Ariston Net App** and follow the wizard to configure the domestic Wi-Fi. **Connection succeeded** when the "AP" icon will disappear and the Wi-Fi icon will appear on the display. Wi-Fi indicator lamp will keep on.

EN

1 FIRST Wi-Fi CONFIGURATION

A Free download VELIS ARISTON NET App from the **Apple App Store** or **Google Play**.

B Press the **Wi-Fi Button on the VELIS's HMI** to activate the Wi-Fi.

C **Press again for 5 sec** the Wi-Fi Button on the VELIS's HMI to create the VELIS Access Point.

D **Connect the smartphone** to the Access Point. On the network setting, select the «**Remote GW Thermo**» network.

E **Start Velis Ariston Net App** and follow the wizard to configure the domestic Wi-Fi. **Connection succeeded** when the "AP" icon will disappear and the Wi-Fi icon will appear on the display. Wi-Fi indicator lamp will keep on.

EN

1 FIRST Wi-Fi CONFIGURATION

A Free download VELIS ARISTON NET App from the **Apple App Store** or **Google Play**.

B Press the **Wi-Fi Button on the VELIS's HMI** to activate the Wi-Fi.

C **Press again for 5 sec** the Wi-Fi Button on the VELIS's HMI to create the VELIS Access Point.

D **Connect the smartphone** to the Access Point. On the network setting, select the «**Remote GW Thermo**» network.

E **Start Velis Ariston Net App** and follow the wizard to configure the domestic Wi-Fi. **Connection succeeded** when the "AP" icon will disappear and the Wi-Fi icon will appear on the display. Wi-Fi indicator lamp will keep on.

EN

1 FIRST Wi-Fi CONFIGURATION

A Free download VELIS ARISTON NET App from the **Apple App Store** or **Google Play**.

B Press the **Wi-Fi Button on the VELIS's HMI** to activate the Wi-Fi.

C **Press again for 5 sec** the Wi-Fi Button on the VELIS's HMI to create the VELIS Access Point.

D **Connect the smartphone** to the Access Point. On the network setting, select the «**Remote GW Thermo**» network.

E **Start Velis Ariston Net App** and follow the wizard to configure the domestic Wi-Fi. **Connection succeeded** when the "AP" icon will disappear and the Wi-Fi icon will appear on the display. Wi-Fi indicator lamp will keep on.

EN

1 FIRST Wi-Fi CONFIGURATION

A Free download VELIS ARISTON NET App from the **Apple App Store** or **Google Play**.

B Press the **Wi-Fi Button on the VELIS's HMI** to activate the Wi-Fi.

C **Press again for 5 sec** the Wi-Fi Button on the VELIS's HMI to create the VELIS Access Point.

D **Connect the smartphone** to the Access Point. On the network setting, select the «**Remote GW Thermo**» network.

E **Start Velis Ariston Net App** and follow the wizard to configure the domestic Wi-Fi. **Connection succeeded** when the "AP" icon will disappear and the Wi-Fi icon will appear on the display. Wi-Fi indicator lamp will keep on.

EN

1 FIRST Wi-Fi CONFIGURATION

A Free download VELIS ARISTON NET App from the **Apple App Store** or **Google Play**.

B Press the **Wi-Fi Button on the VELIS's HMI** to activate the Wi-Fi.

C **Press again for 5 sec** the Wi-Fi Button on the VELIS's HMI to create the VELIS Access Point.

D **Connect the smartphone** to the Access Point. On the network setting, select the «**Remote GW Thermo**» network.

E **Start Velis Ariston Net App** and follow the wizard to configure the domestic Wi-Fi. **Connection succeeded** when the "AP" icon will disappear and the Wi-Fi icon will appear on the display. Wi-Fi indicator lamp will keep on.

EN

1 FIRST Wi-Fi CONFIGURATION

A Free download VELIS ARISTON NET App from the **Apple App Store** or **Google Play**.

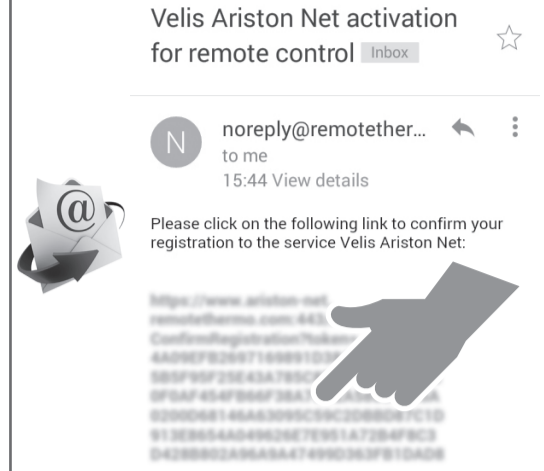
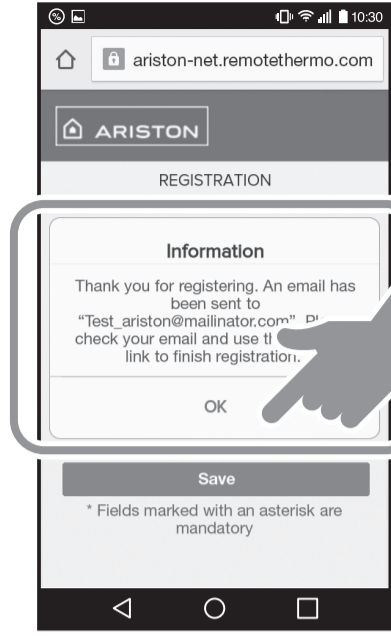
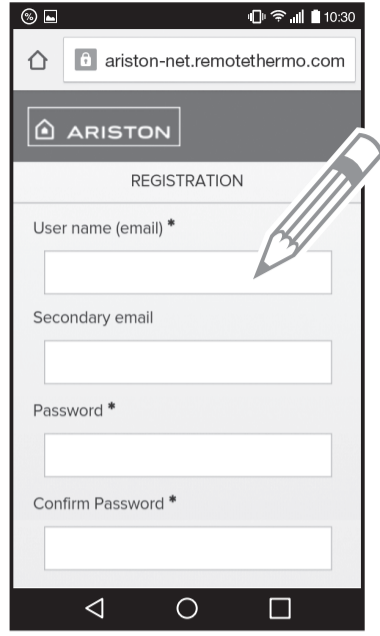
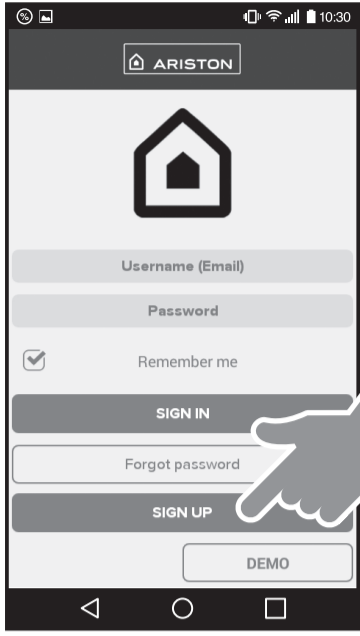
B Press the **Wi-Fi Button on the VELIS's HMI** to activate the Wi-Fi.

C **Press again for 5 sec** the Wi-Fi Button on the VELIS's HMI to create the VELIS Access Point.

D **Connect the smartphone** to the Access Point. On the network setting, select the «**Remote GW Thermo**» network.

E **Start Velis Ariston Net App** and follow the wizard to configure the domestic Wi-Fi. **Connection succeeded** when the "AP" icon will disappear and the Wi-Fi icon will appear on the display. Wi-Fi indicator lamp will keep on.

2 Account registration



EN

2 ACCOUNT REGISTRATION

Click on SIGN UP button on Mobile App and fill in the fields. Enter in your mailbox and click on the link to activate the user account.

EN

2 ACCOUNT REGISTRATION

Click on SIGN UP button on Mobile App and fill in the fields. Enter in your mailbox and click on the link to activate the user account.

EN

2 ACCOUNT REGISTRATION

Click on SIGN UP button on Mobile App and fill in the fields. Enter in your mailbox and click on the link to activate the user account.

EN

2 ACCOUNT REGISTRATION

Click on SIGN UP button on Mobile App and fill in the fields. Enter in your mailbox and click on the link to activate the user account.

EN

2 ACCOUNT REGISTRATION

Click on SIGN UP button on Mobile App and fill in the fields. Enter in your mailbox and click on the link to activate the user account.

EN

2 ACCOUNT REGISTRATION

Click on SIGN UP button on Mobile App and fill in the fields. Enter in your mailbox and click on the link to activate the user account.

EN

2 ACCOUNT REGISTRATION

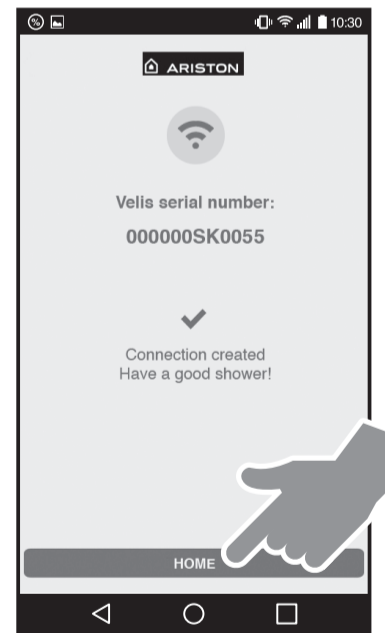
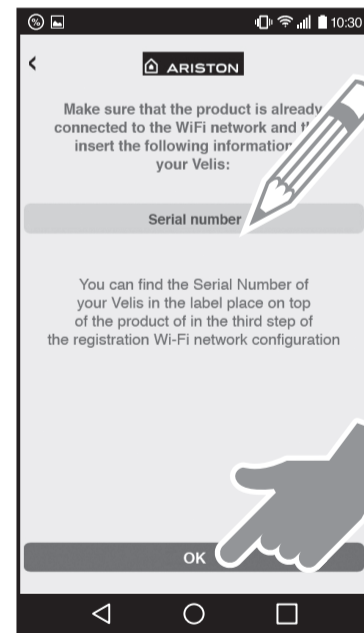
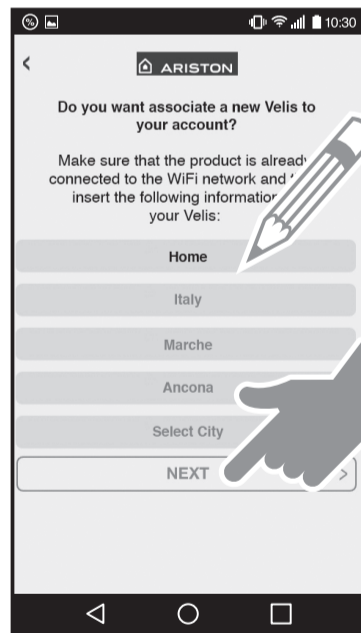
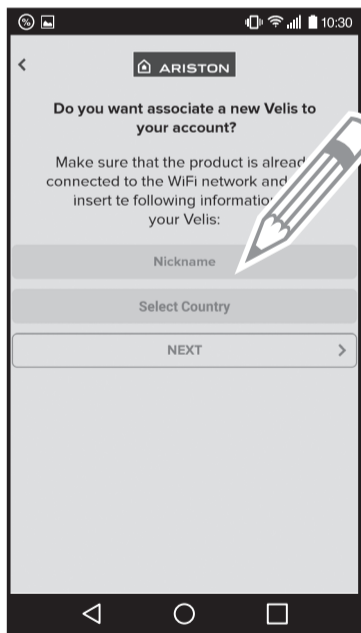
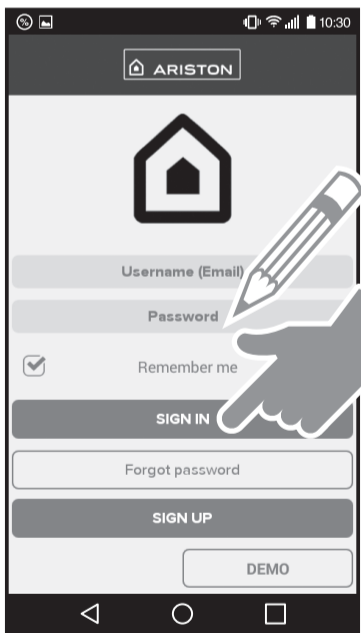
Click on SIGN UP button on Mobile App and fill in the fields. Enter in your mailbox and click on the link to activate the user account.

EN

2 ACCOUNT REGISTRATION

Click on SIGN UP button on Mobile App and fill in the fields. Enter in your mailbox and click on the link to activate the user account.

3 Velis and user binding



EN

3 VELIS AND USER BINDING

Sign in the App and fill in the fields of your Velis and save. **Connection created. Have a good shower!**

EN

3 VELIS AND USER BINDING

Sign in the App and fill in the fields of your Velis and save. **Connection created. Have a good shower!**

EN

3 VELIS AND USER BINDING

Sign in the App and fill in the fields of your Velis and save. **Connection created. Have a good shower!**

EN

3 VELIS AND USER BINDING

Sign in the App and fill in the fields of your Velis and save. **Connection created. Have a good shower!**

EN

3 VELIS AND USER BINDING

Sign in the App and fill in the fields of your Velis and save. **Connection created. Have a good shower!**

EN

3 VELIS AND USER BINDING

Sign in the App and fill in the fields of your Velis and save. **Connection created. Have a good shower!**

EN

3 VELIS AND USER BINDING

Sign in the App and fill in the fields of your Velis and save. **Connection created. Have a good shower!**

EN

3 VELIS AND USER BINDING

Sign in the App and fill in the fields of your Velis and save. **Connection created. Have a good shower!**